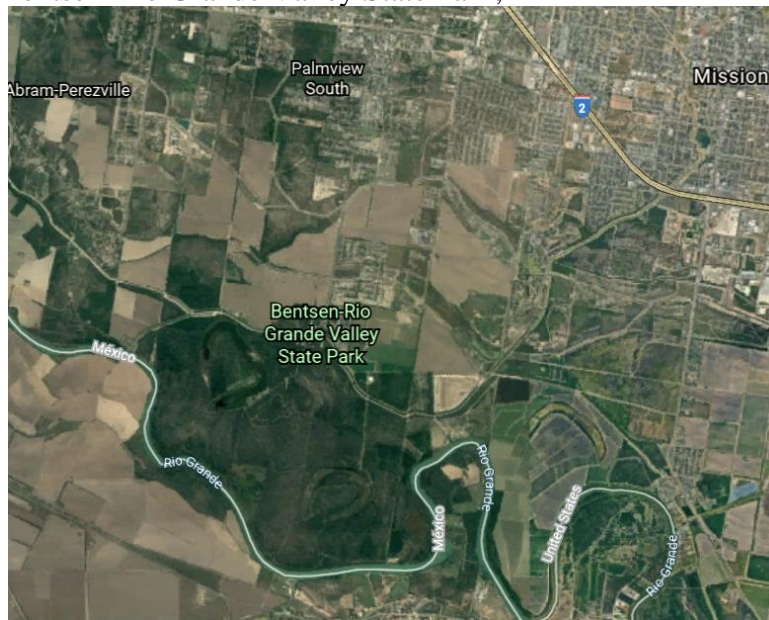


Rep. Cuellar Protects South Texas Landmarks from Border Wall in 2021 Appropriations Homeland Security Bill

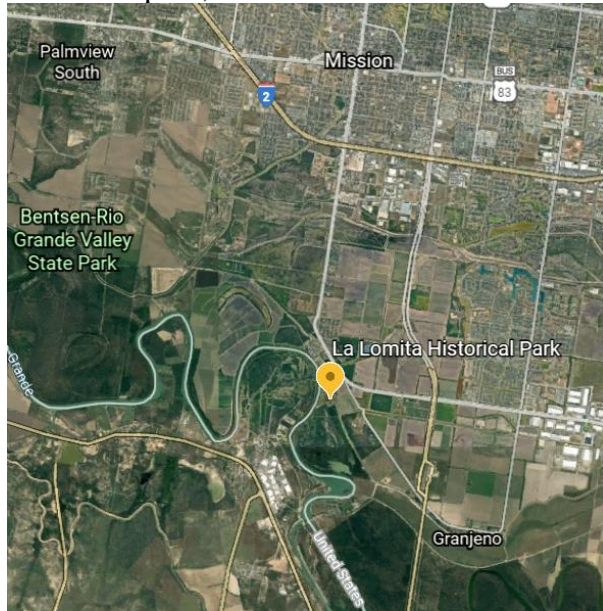
(1) within the Santa Ana Wildlife Refuge;



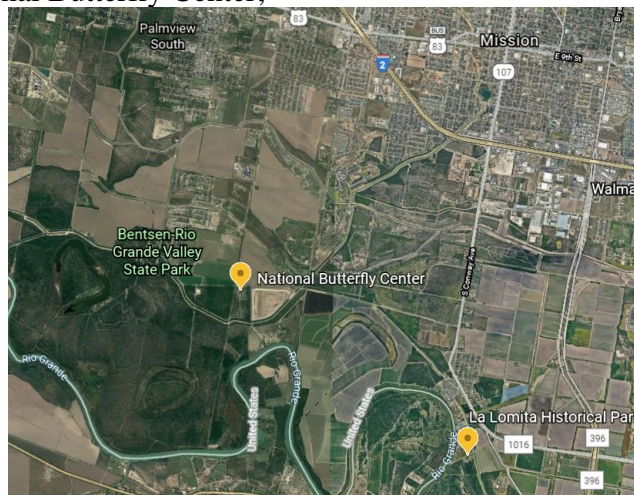
(2) within the Bentsen-Rio Grande Valley State Park;



(3) within La Lomita Historical park;



(4) within the National Butterfly Center;



(5) within or east of the Vista del Mar Ranch tract of the Lower Rio Grande Valley National Wildlife Refuge;



(6) within historic cemeteries;

~Not all cemeteries have been identified~

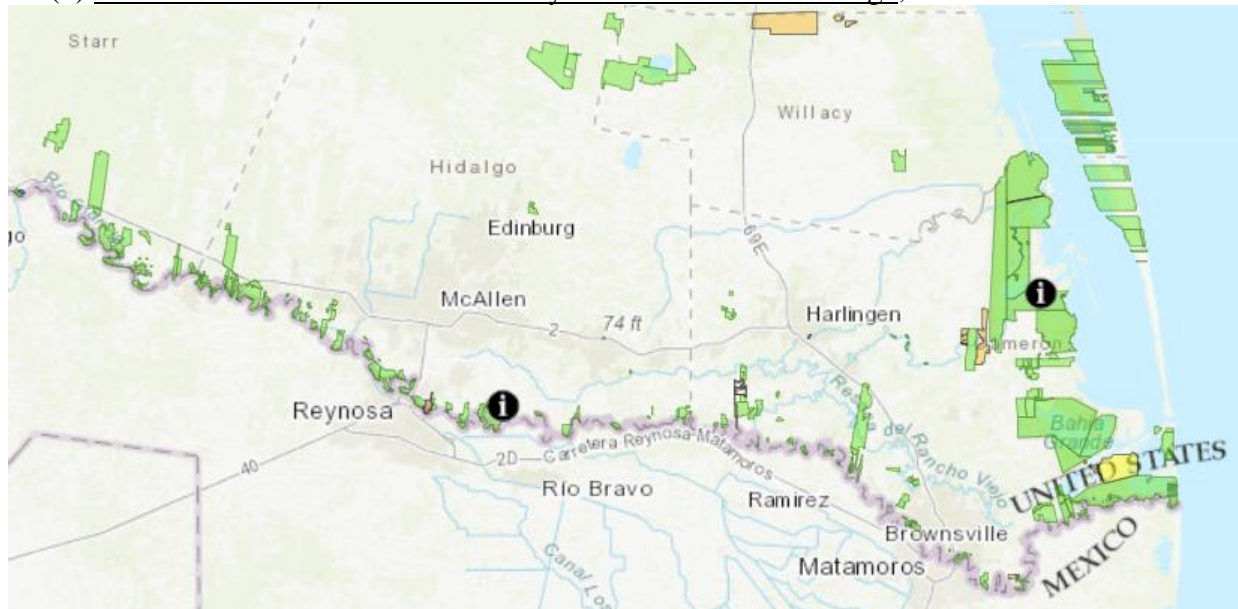
1. Darwin Cemetery (Webb Co.)
2. Dolores Cemetery (Webb Co.)
3. Garcia Family Cemetery (Webb Co.)
4. Islitas Cemetery (Webb Co.)
5. San Jose de Palafox Cemetery (Webb Co.)
6. Dolores Nuevo Cemetery (Zapata Co.)
7. Old Ramireño Cemetery (Zapata Co.)
8. Los Garzas Cemetery (Starr Co.)
9. Old Rio Grande City Cemetery (Starr Co.)
10. Eli Jackson Cemetery (Hidalgo Co.)

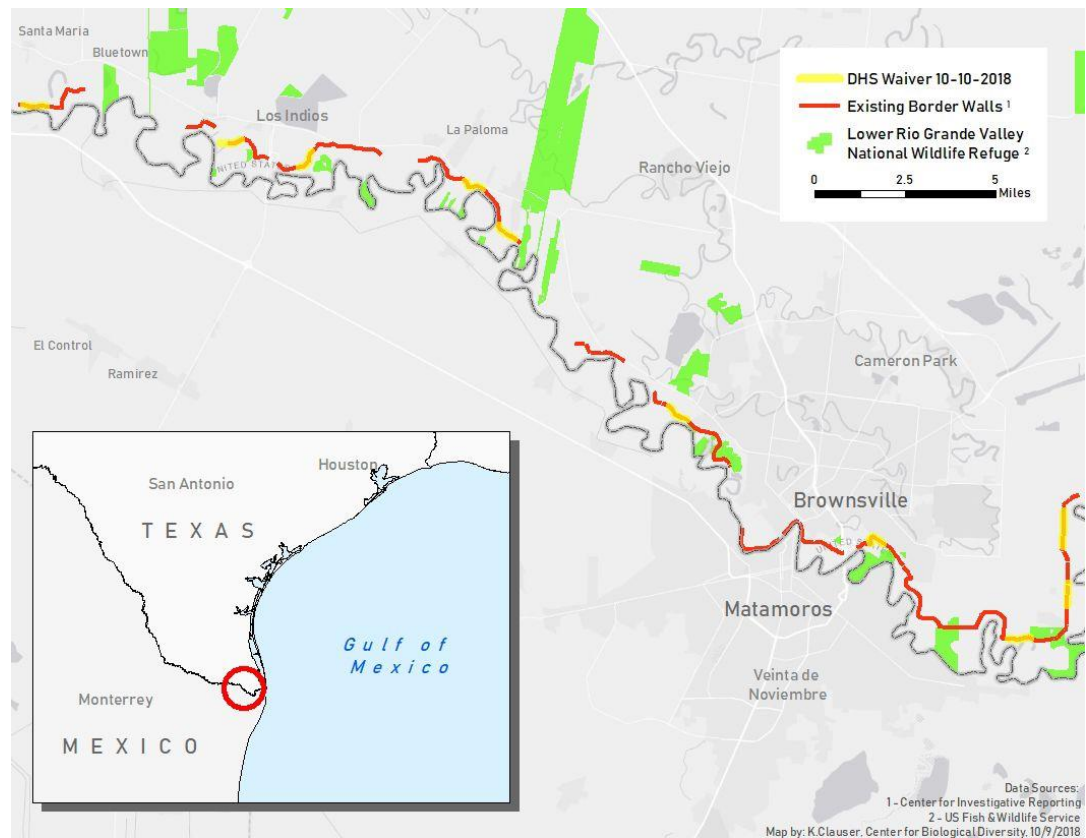
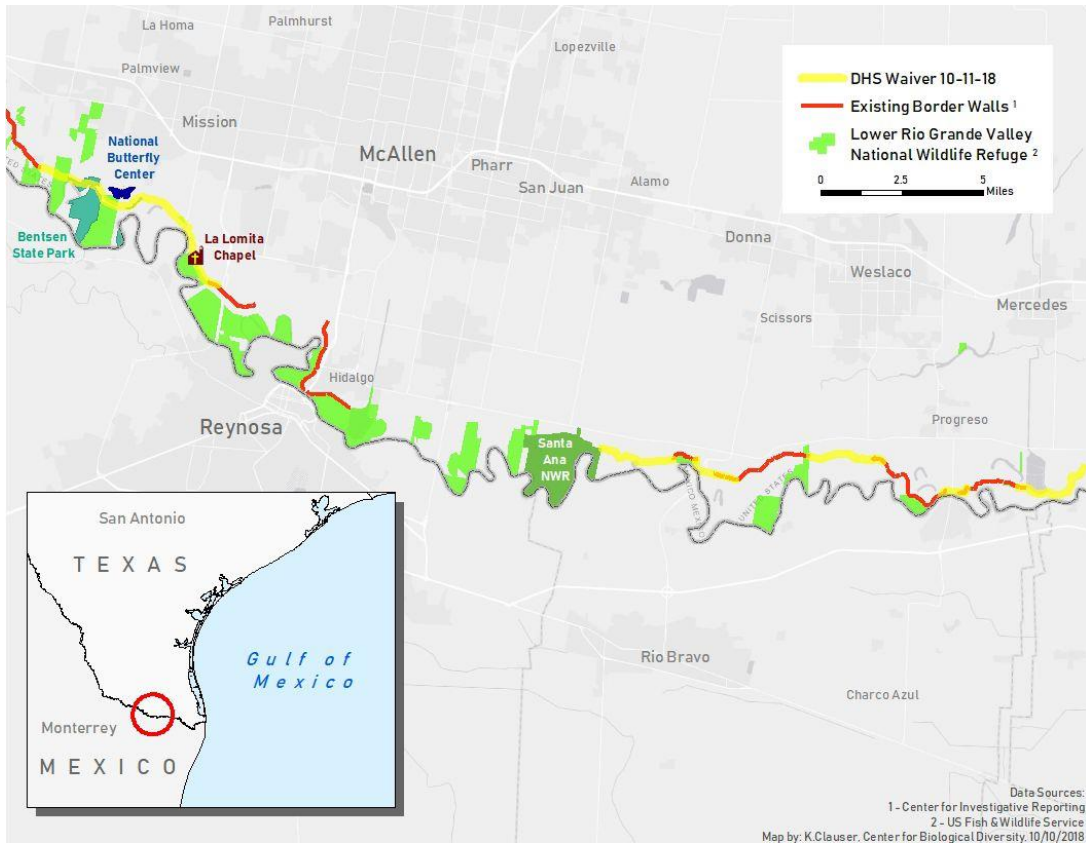
(7) within any site on the National Register of Historic Places;

~Not all sites have been identified~

1. Fort McIntosh (Webb Co.)
2. Barrio Azteca Historic District (Webb Co.)
3. Trevino-Uribe Rancho (Zapata Co.)
4. San Ygnacio Historic District (Zapata Co.)
5. Roma-San Pedro International Bridge (Starr Co.)
6. Rio Grande City Downtown Historic District (Starr Co.)
7. Fred & Nell Kain Guerra House (Starr Co.)

(8) within the Lower Rio Grande Valley National Wildlife Refuge; and





(9) within 1 mile of historic sites along the Los Caminos del Río Heritage Corridor.

